

Attention!

To keep the sprayer perfect in performance, please follow the instruction printed in this page.

A. Operation Instruction

1. Check every fastener and make sure that the sprayer and the motor are installed firmly on the frame.
2. Set the two pulleys in a straight line, and the belt in an appropriate tightness.
3. Every joint of the hoses must be tightened to prevent from leaking.
4. Before starting the motor, shut off the (57) Cock (Valve) , loose the (59) Pressure Adjusting Screw and pull the (72) Pressure Adjuster to the top.
5. Start the motor to power the sprayer, keep a proper revolution. Press the (72) Pressure Adjuster to the bottom.Keep the pressure around 21-35Kgs.By adjusting the (59) Pressure Adjusting Screw.
6. Open the (57) Cock (Valve) to start spraying.
7. After the spraying is over, pull the (72) Pressure Adjuster to the top and operate the sprayer with fresh water to clean out the remaining chemicals.

B. Pump Lubrication

1. Replace the engine oil after the sprayer has been used for the first 10 hours, 50 hours, and thence every 70 hours.
2. Drain away the dirty engine oil by screwing off the (14) Drain Plug.
3. After the (14) Drain Plug is screwed on, remove the (2) oil Inlet Cover and refill #30-40 clean engine oil.
4. Keep the oil level at 2 / 3 of the (13) oil Gauge.
5. Always fill the (36) Grease Cups with grease. Screw on the (36) Grease Cups 2-3 cycles every 2 hours of spraying.

C. Trouble Shooting

a. Feeding Failure & Pressure Instability

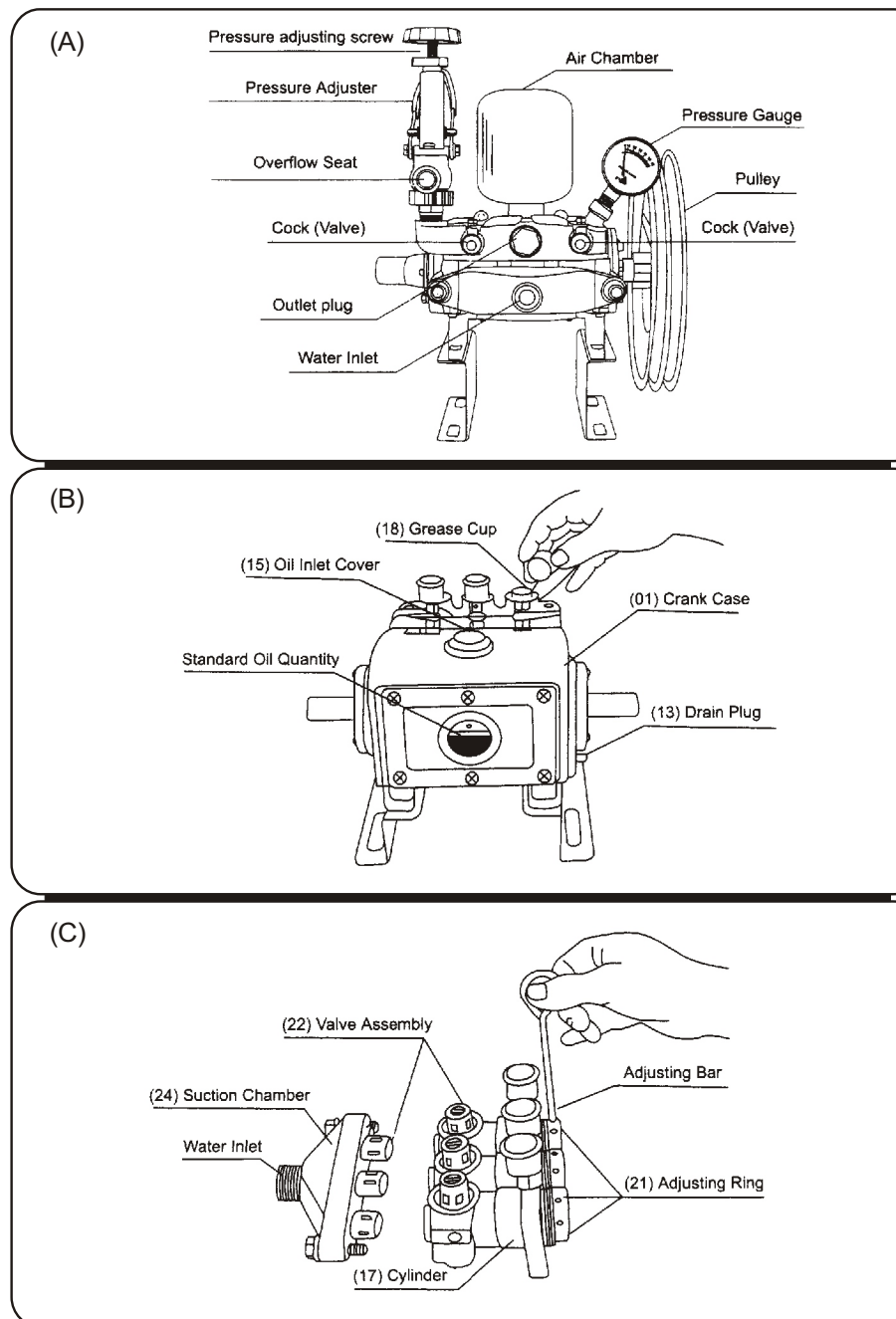
1. Check whether the (92) Suction Hose is leaking or is stuck.
2. Open the (57) Cock (valve) to release the surplus air.
3. Remove the (45) Suction Chamber and the (51) Water Outlet Chamber check if the (39) Valve Assembly are stuck or damaged.

b. Pressure Insufficiency

1. Check whether the pressure has been adjusted properly. (refer to the operation instruction No. 5)
2. Check whether the belt is too loose.
3. Check whether the Spray Hose and the couplings are broken and damaged.

c. Cylinder Leakage.

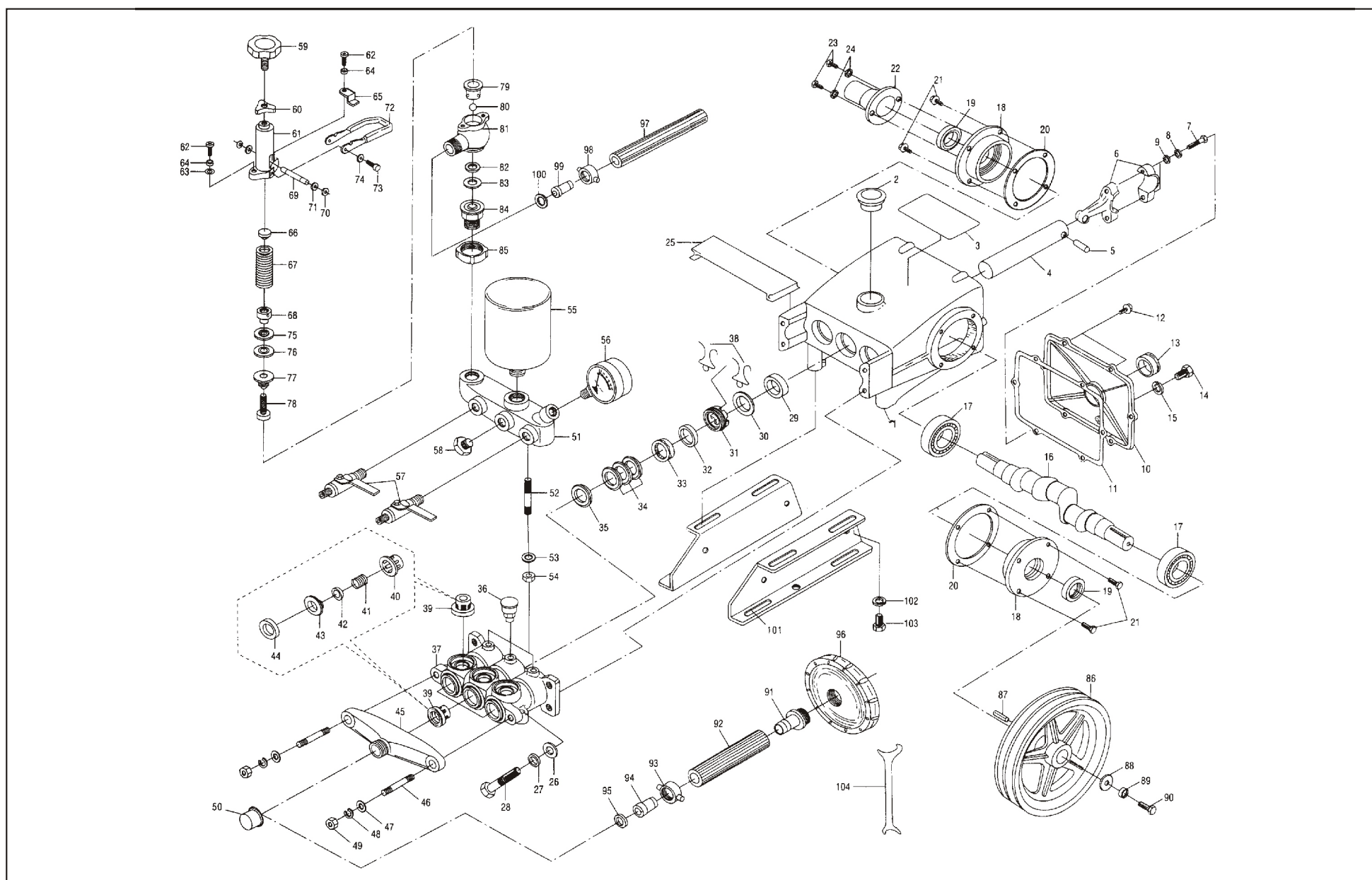
1. Remove the (25) Gland cover and wind up the (31) Adjusting Rings.
 2. If still in vain, replace the (34) V-packings in the (37) Cylinder.
- Remark: () indicates the " part number " of relative part.



POWER SPRAYER OPERATION SPECIFICATION



DIAGRAM OF THE POWER SPRAYER



PARTS LIST

01	Crank case	36	Grease cup	71	Plain washer
02	Oil inlet cover	37	Cylinder	72	Pressure adjuster
03	Name plate	38	Set clip for adjusting	73	Hex bolt
04	Plunger	39	Valve assembly	74	Plain washer
05	Plunger pin	40	Spring box	75	Packing holder
06	Connecting rod	41	Valve spring	76	Spindle packing
07	Bolt, connecting rod	42	Stopper	77	Box, oil seal
08	Spring washer	43	Valve seat	78	Spindle
09	Plain washer	44	Valve seal	79	Spindle cap
10	Cover, crank case	45	Suction chamber	80	Ball valve
11	Packing, cover	46	Stud bolt	81	Body, over flow
12	Screw, cover	47	Plain washer	82	Valve seat
13	Oil gauge	48	Spring washer	83	Packing, valve seat
14	Drain plug	49	Hex nut	84	Flange
15	Packing drain plug	50	Suction cap	85	Lock nut
16	Crank shaft	51	Water outlet chamber	86	V-pulley
17	Ball bearing	52	Stud bolt	87	Key
18	Case ball bearing	53	Plain washer	88	Plain washer
19	Oil seal, crank shaft	54	Hex nut	89	Spring washer
20	Packing, bearing case	55	Air chamber	90	Hex bolt
21	Hex bolt	56	Pressure gauge	91	Strainer joint
22	Cover, crank shaft	57	Cock (valve)	92	Suction hose
23	Screw, crank cover	58	Outlet plug	93	Wing nut, suction
24	Plain washer	59	Pressure adjusting screw	94	Male joint
25	Gland cover	60	Fly nut	95	Suction, packing
26	Plain washer	61	Spring box	96	Strainer, suction assembly
27	Spring washer	62	Cross screw	97	Over flow hose
28	Stud bolt	63	Plain washer	98	Wing nut, over flow
29	Plunger oil seal	64	Spring washer	99	Male joint
30	Check ring	65	Level	100	Over flow packing
31	Adjusting ring	66	Upper metal	101	Bed, crank case
32	Grease seal	67	Regulation spring	102	Spring washer
33	Grease ring	68	Spring seat	103	Hex bolt
34	V.packing	69	Pin	104	Adjusting handle
35	V.packing seat	70	E-ring		